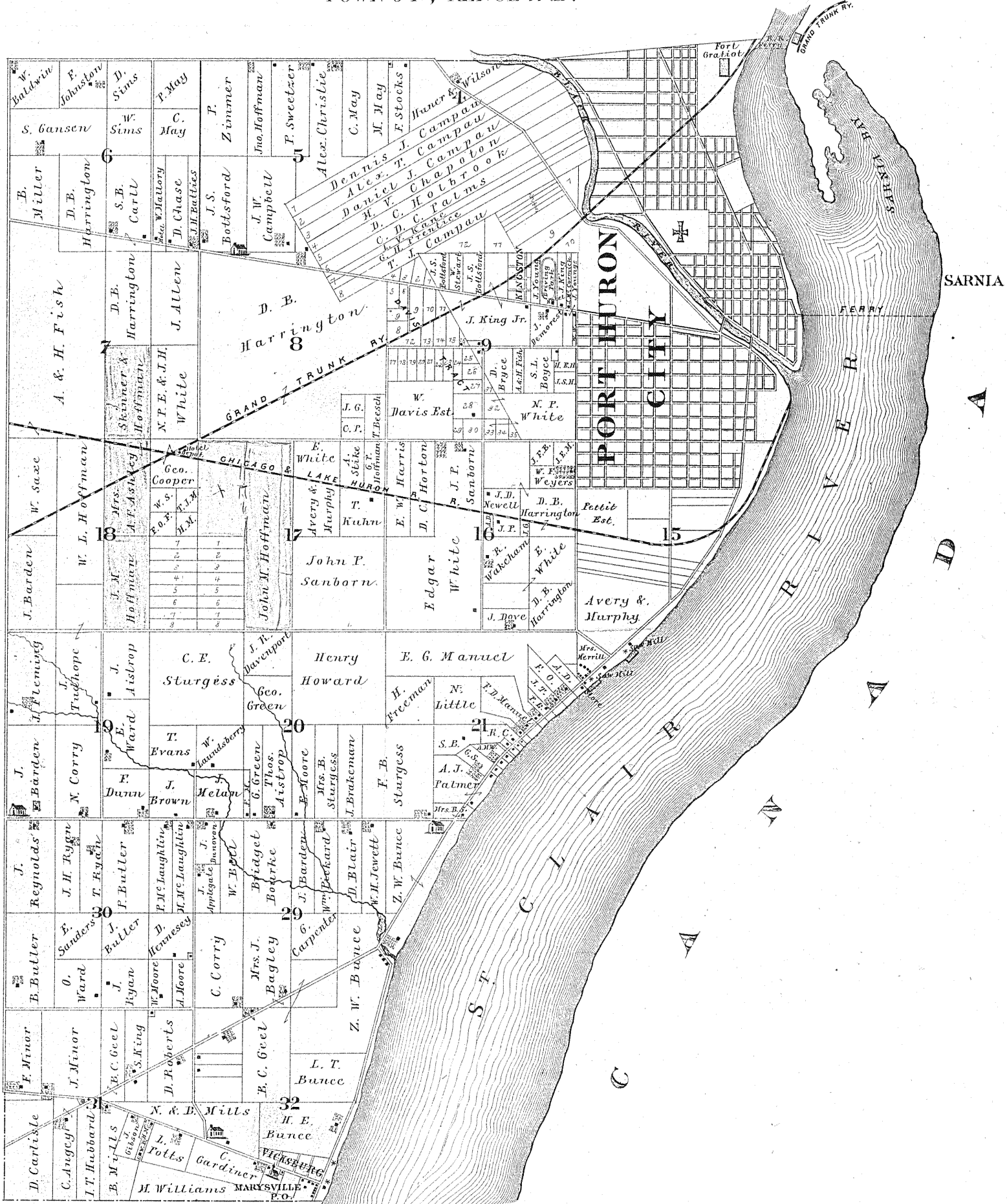


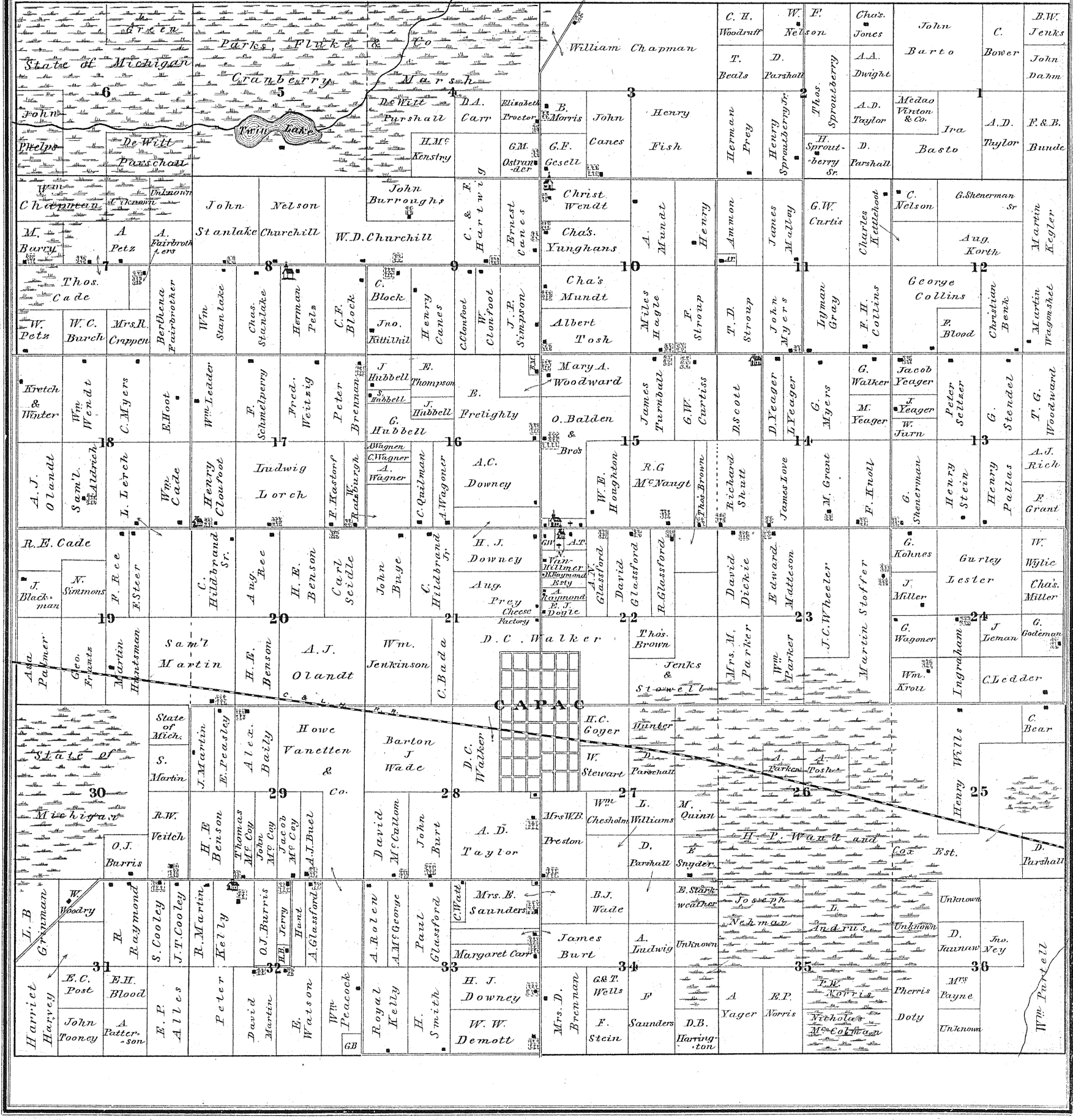
MAP OF PORT HURON TOWNSHIP

TOWN 6 N, RANGE 17 E.



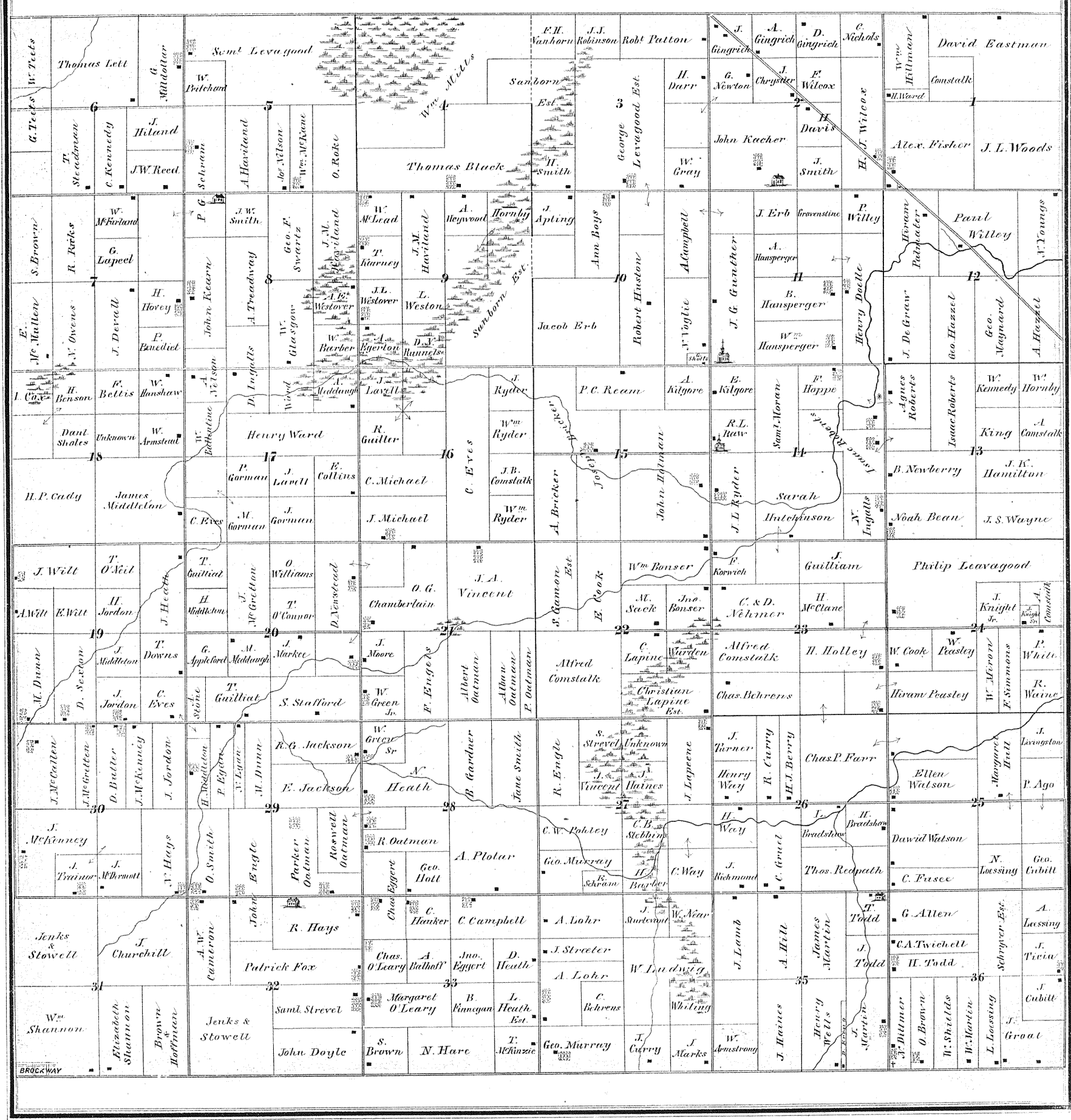
MAP OF MUSSEY TOWNSHIP

T. 7 N., R. 13 E.



MAP OF GREENWOOD TOWNSHIP

T. 8. N. R. 15. E.

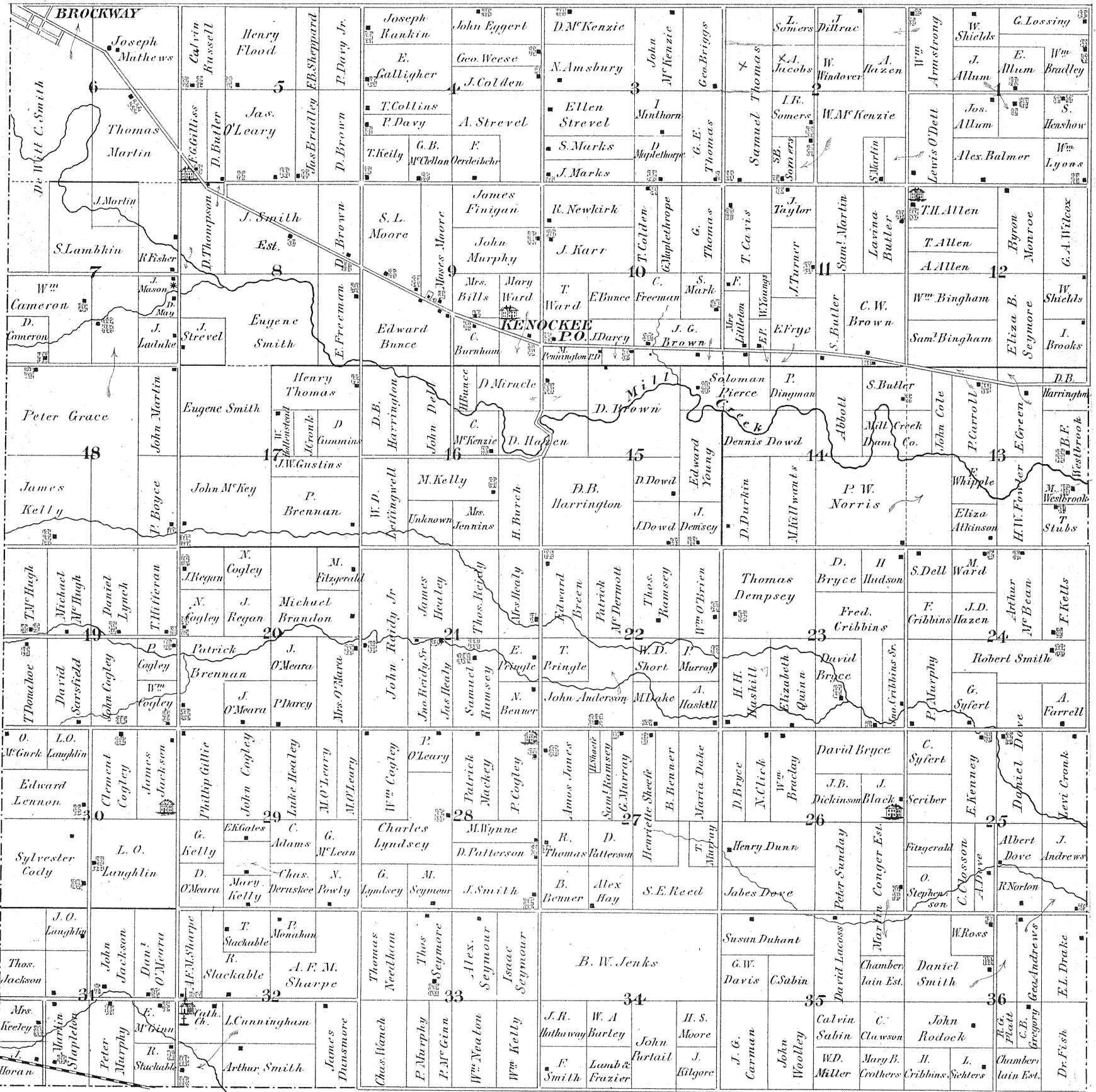


MAP OF

KENOCREE

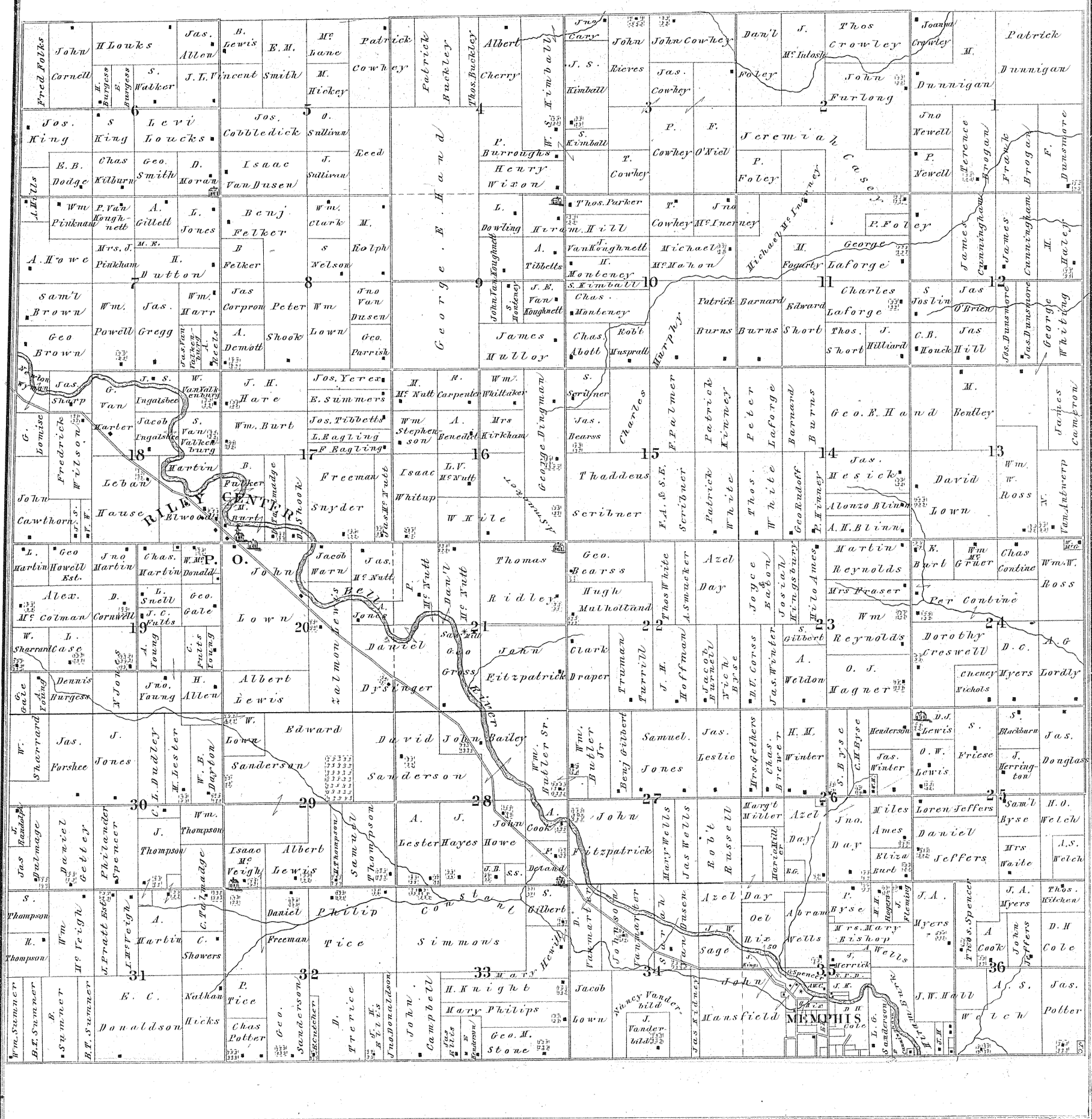
TOWNSHIP

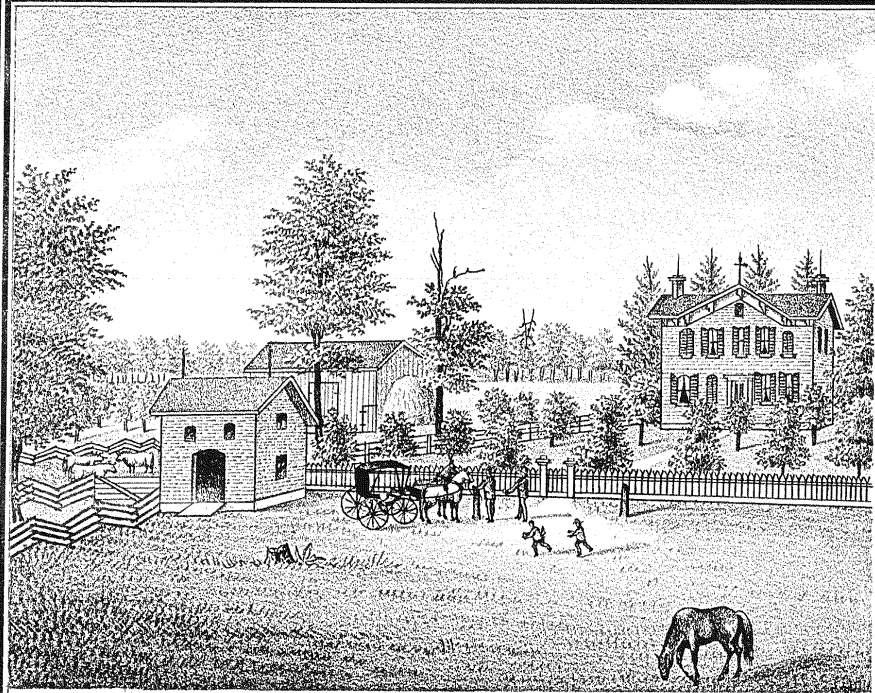
T. 7 N. R. 15 E.



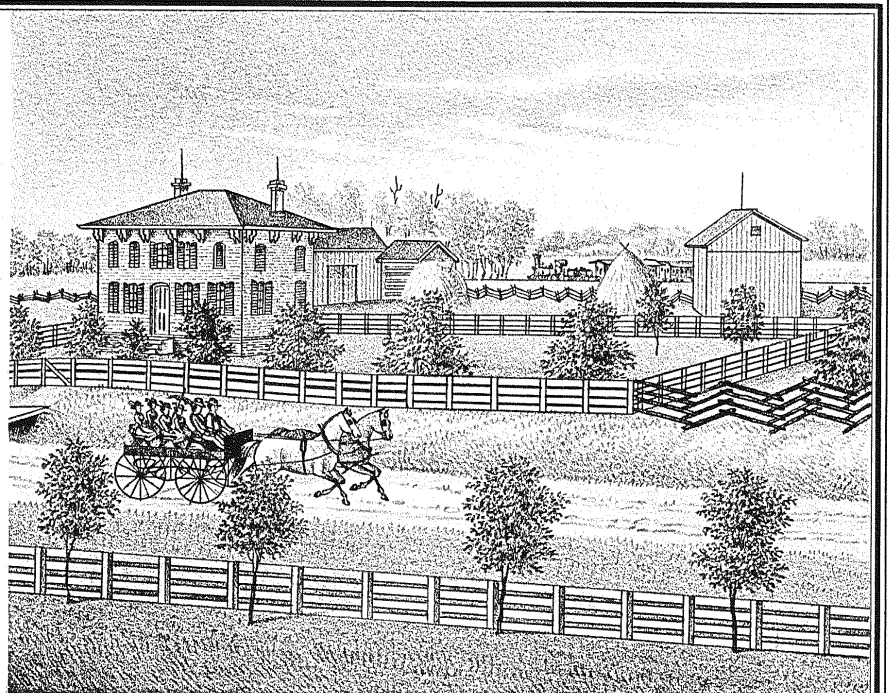
MAP OF RILEY TOWNSHIP

T. 6. R. 14. E.

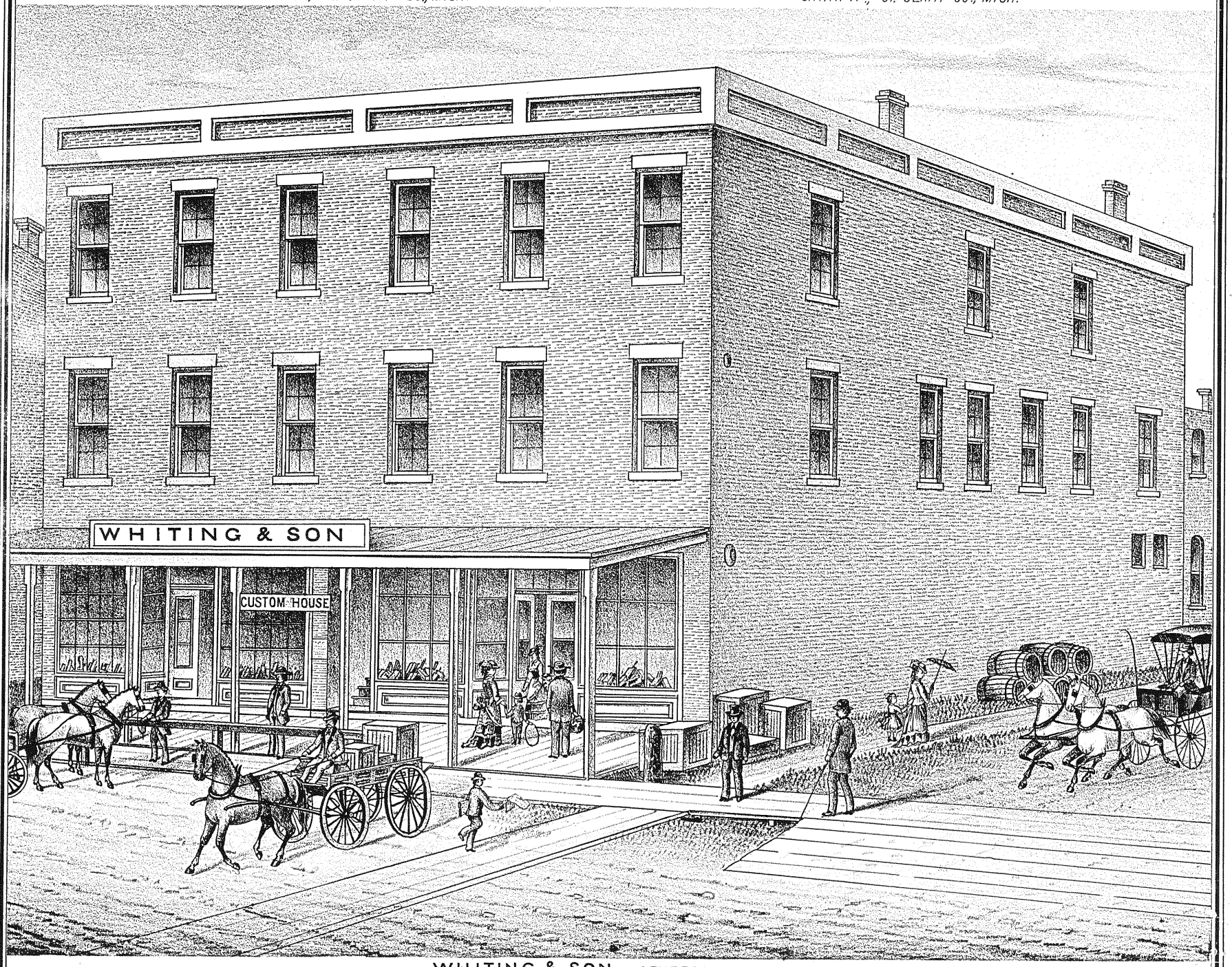




RES. of JONATHAN DEWHIRST,
SEC. 2. CHINA TP., ST. CLAIR CO., MICH.



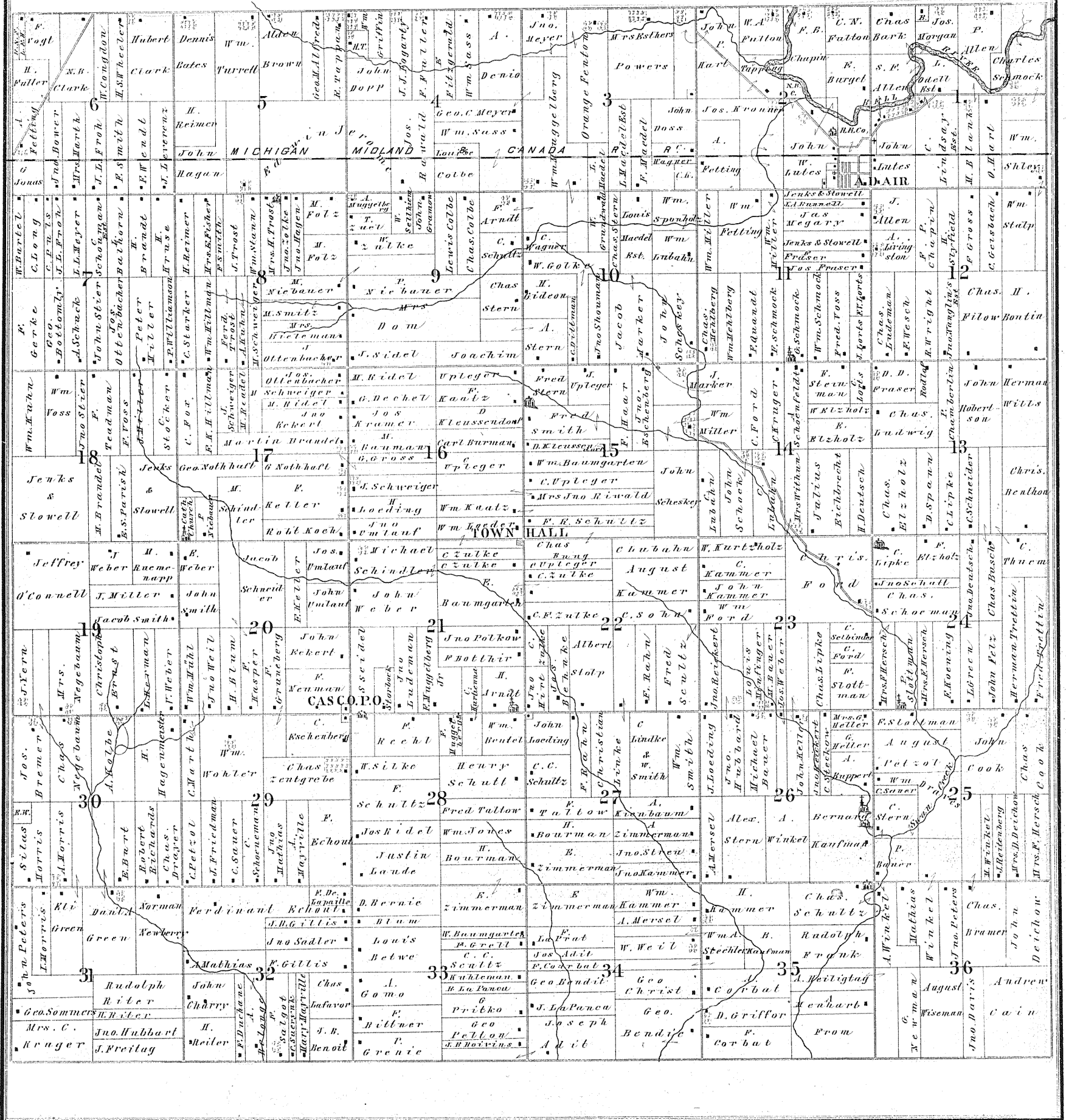
RES. of FREDERICK LAYLE,
CHINA TP., ST. CLAIR CO., MICH.



WHITING & SON, GENERAL MERCHANTS,
St. Clair, Mich.

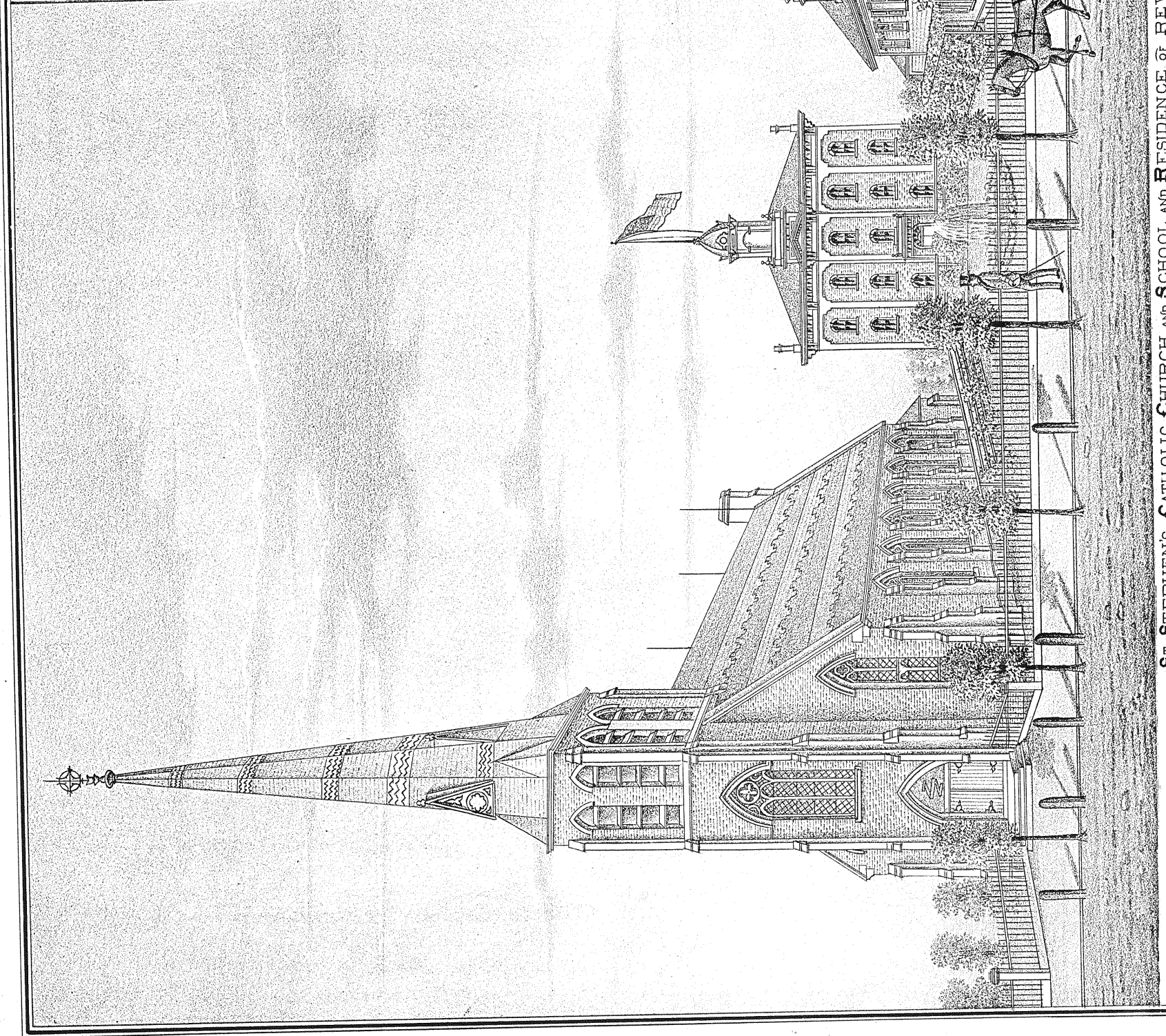
MAP OF CASCO TOWNSHIP

T. 15. N. R. 15. E.

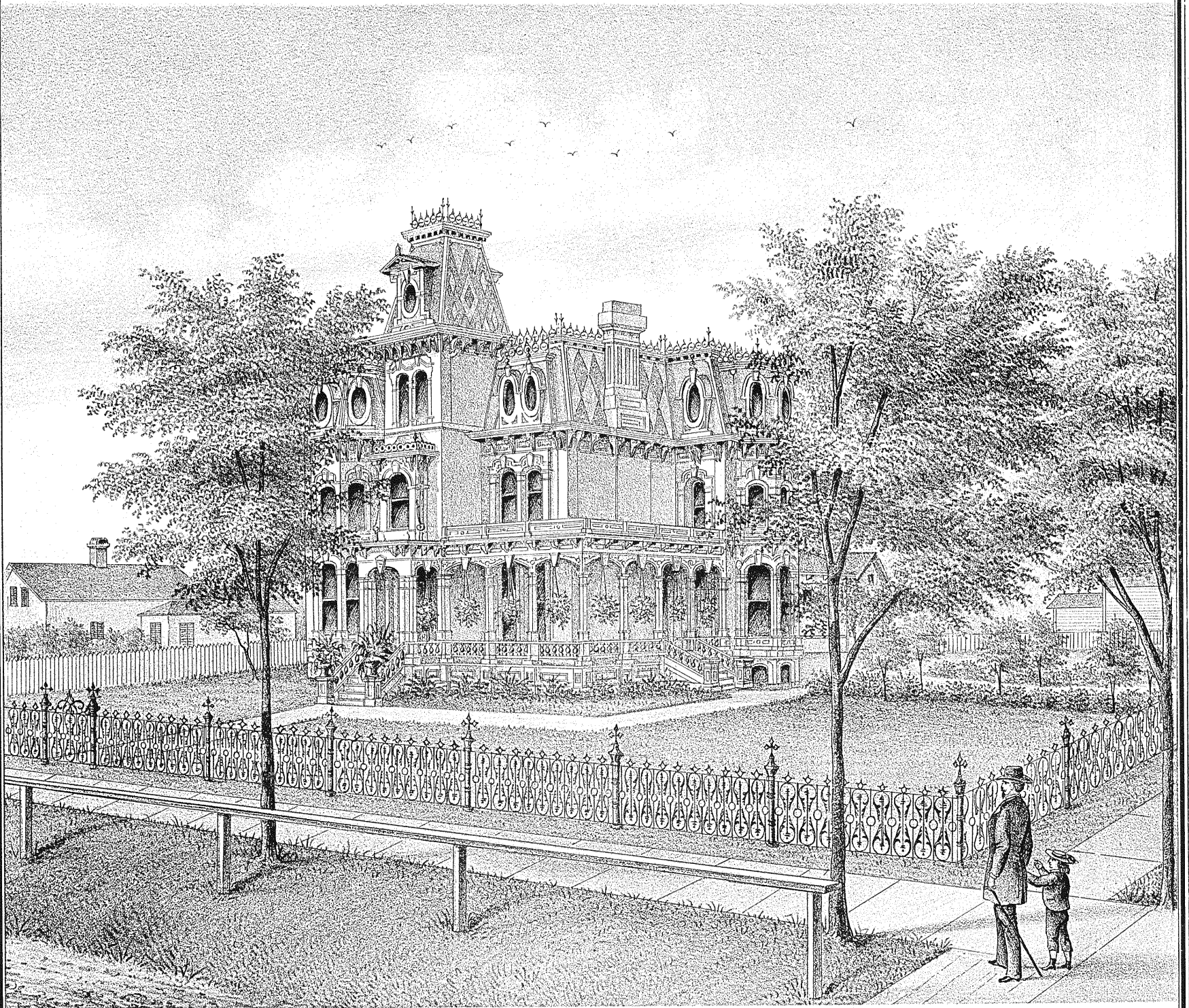




Rev. E. Van Lauwe.



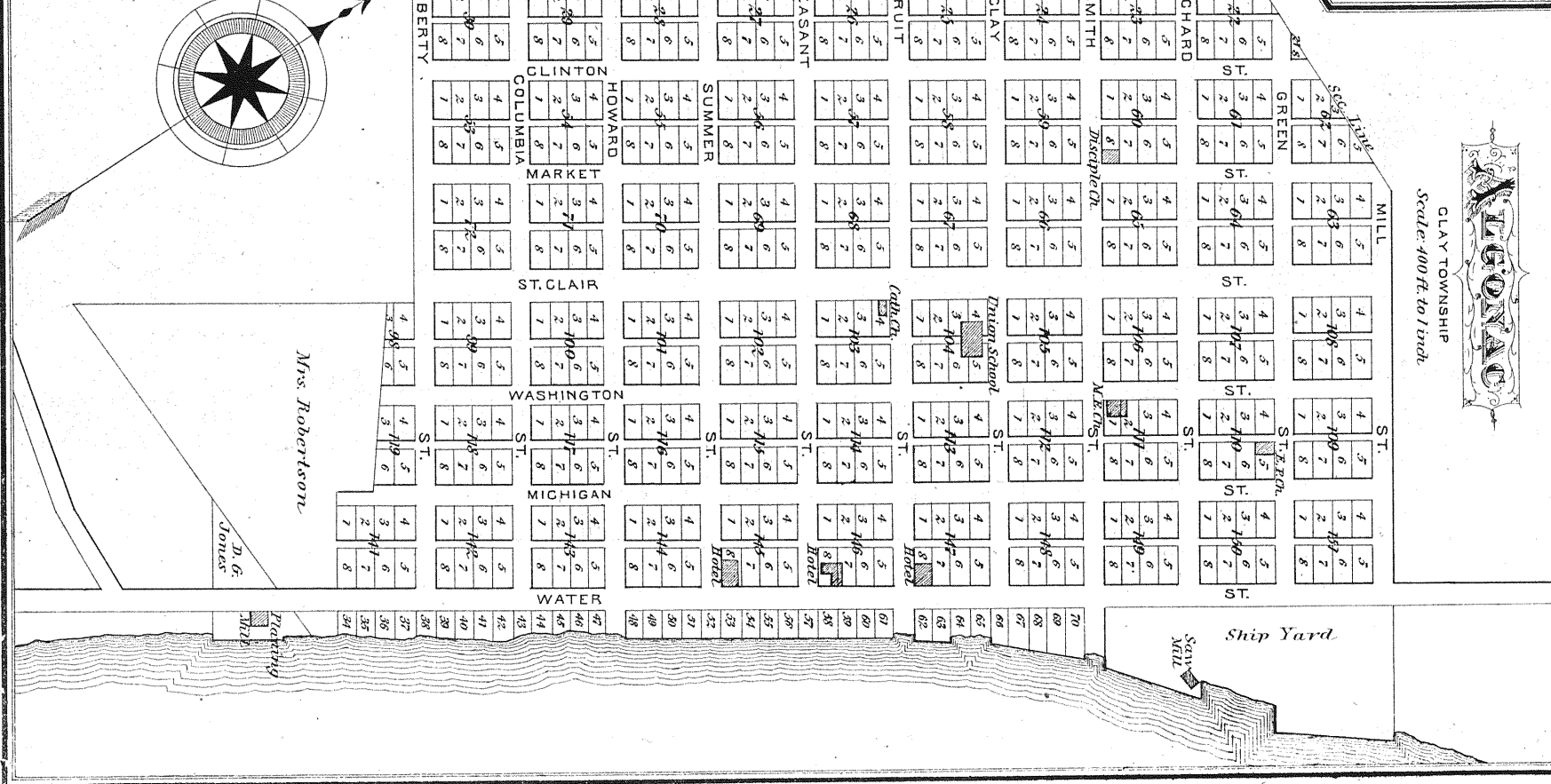
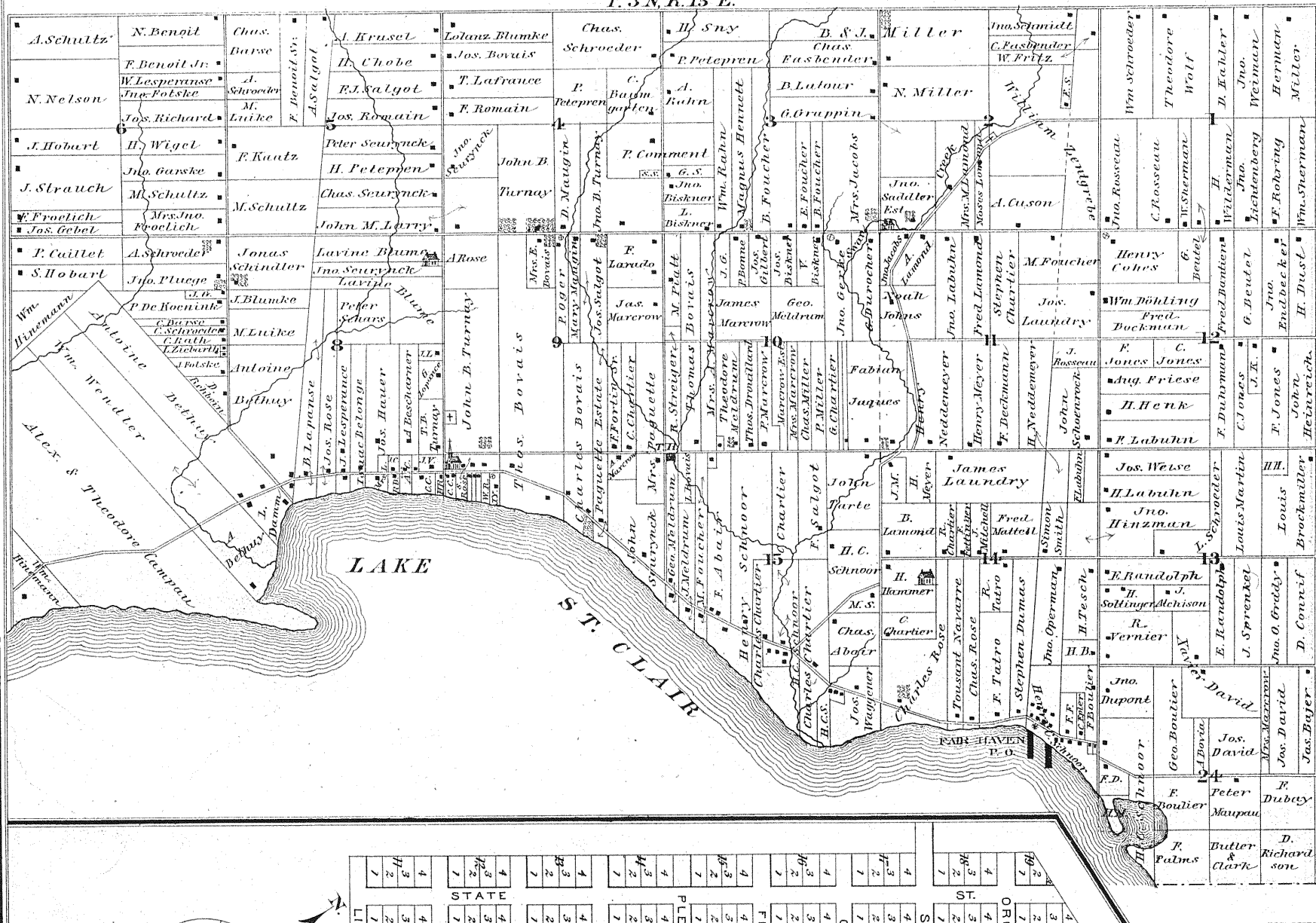
ST. STEPHEN'S CATHOLIC CHURCH AND SCHOOL AND RESIDENCE OF REV. E. VAN LAUWE,
 ERIE ST. BETWEEN BROAD AND PARK STREETS, PORT HURON, MICH.



RESIDENCE OF JOHN JOHNSTON, ESQ.
N.E. CORNER OF WALL & SIXTH STREETS,
PORT HURON, MICHIGAN.

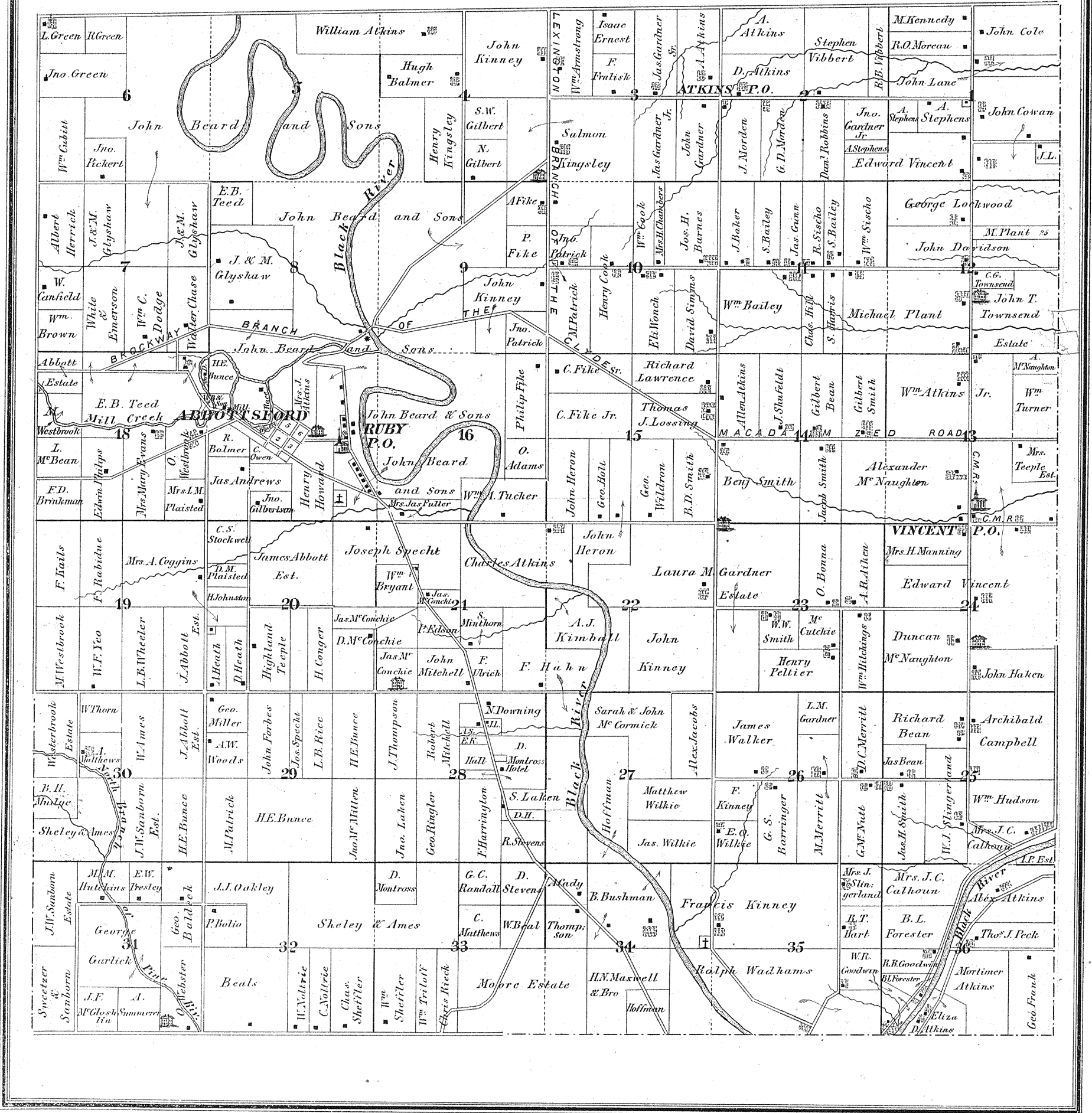
MAP OF IRA TOWNSHIP

T. 3 N. R. 15 E.



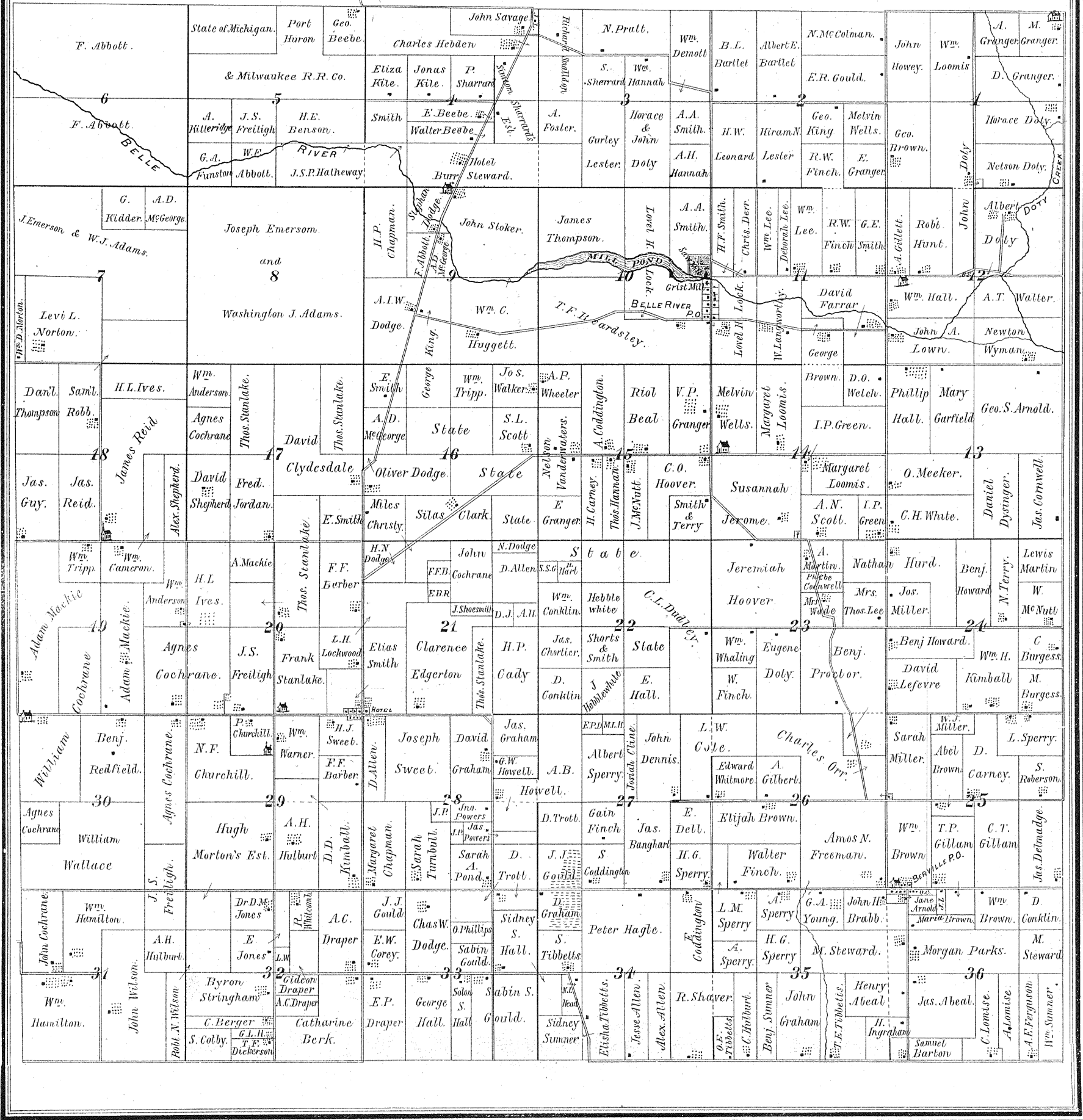
MAP OF CLYDE TOWNSHIP

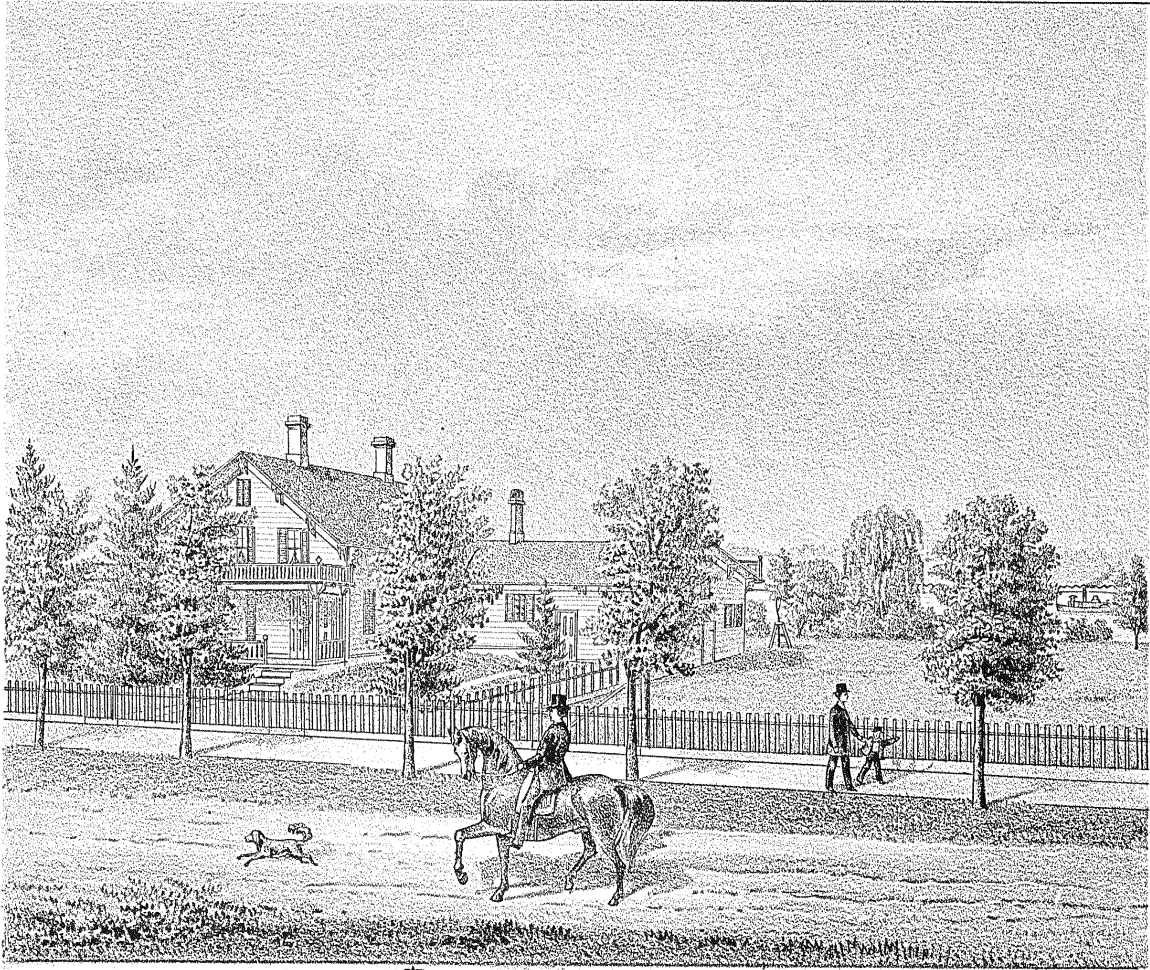
T. 7 N. R. 16 E.



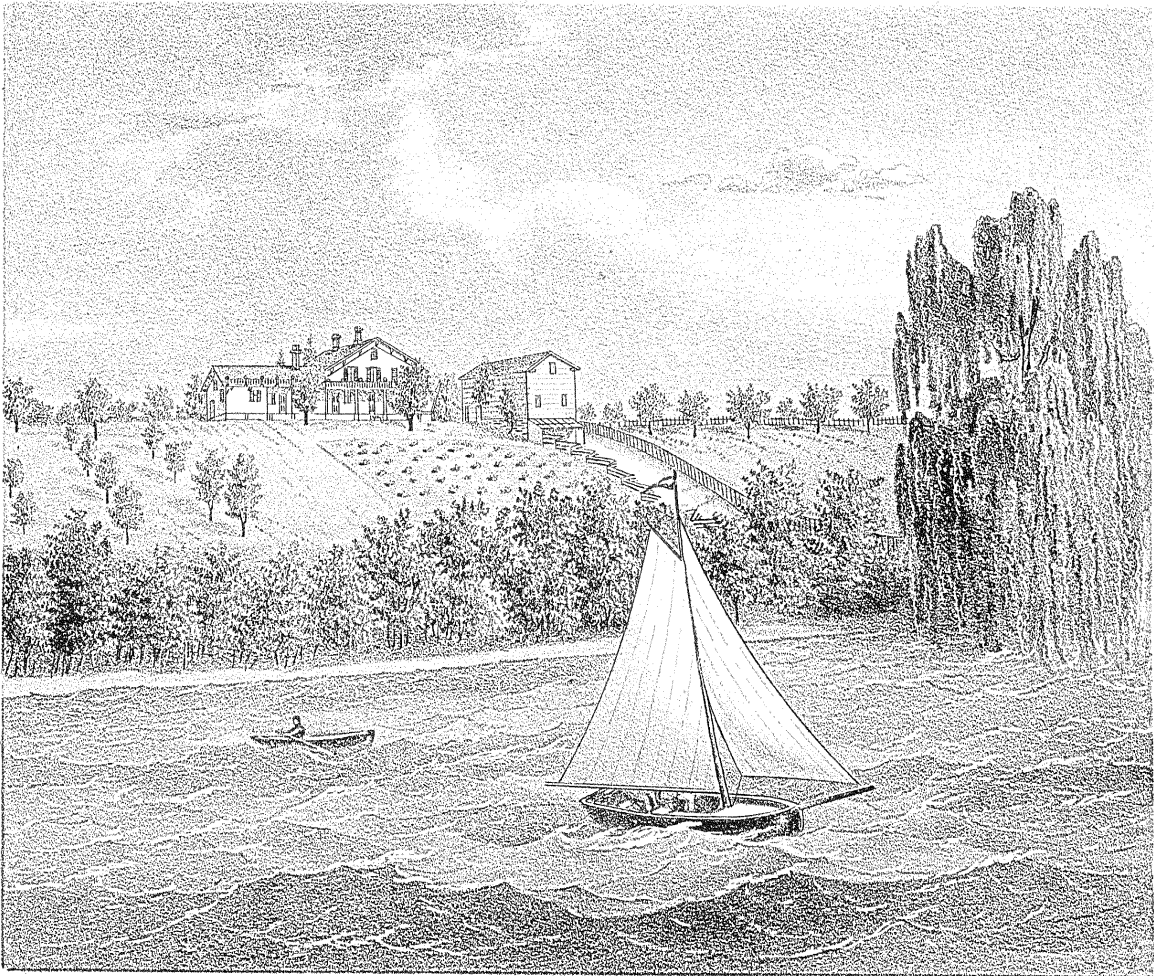
MAP OF BERLIN TOWNSHIP

T. 6 N. R. 13 E.





RES. OF CHESTER CARLETON,
 YANKEE ST., ST. CLAIR TP., ST. CLAIR CO., MICHIGAN.
 VIEW FROM ROAD.
 OCT. 1ST 1875.



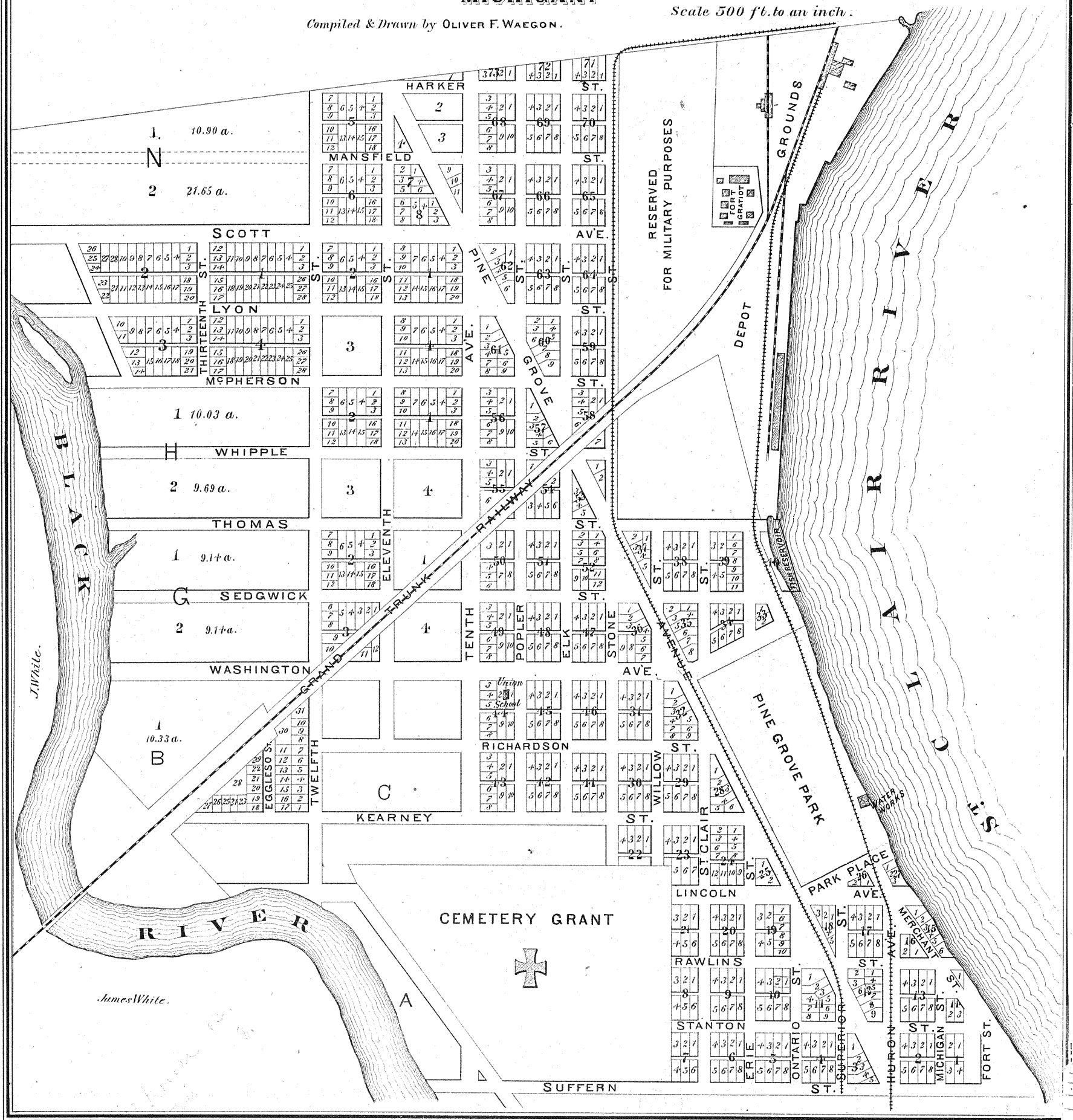
RES. OF CHESTER CARLETON,
 YANKEE ST., ST. CLAIR TP., ST. CLAIR CO., MICHIGAN.
 VIEW FROM ST. CLAIR RIVER.
 OCT. 1ST 1875.

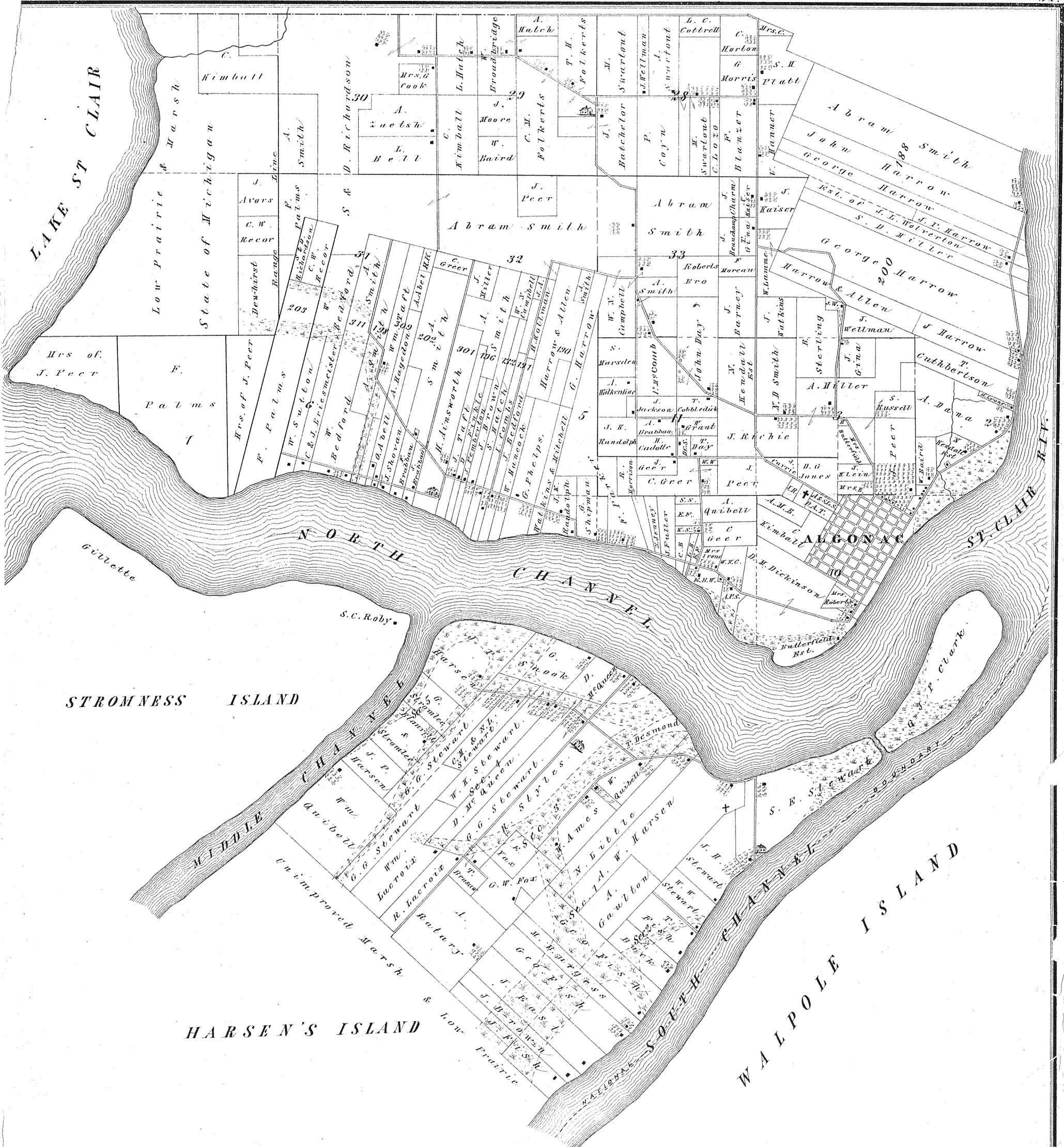
CITY OF PORT HURON, MICHIGAN.

FIFTH WARD.

Compiled & Drawn by OLIVER F. WAEGON.

Scale 500 ft. to an inch.





MAP OF CLAY TOWNSHIP

MAP OF

COTTRELLVILLE

TOWNSHIP

Part of T. 3. N. R. 16 E.

